

# Level 1 – Lobby Level



# Level 10 – Club Level



## LEGEND

### Lobby Level

- 1 The Arrival
- 2 Reflective Pool
- 3 The Lobby
- 4 Lobby Garden
- 5 The Pond
- 6 Grand Staircase
- 7 Garden Lounge
- 8 Feature Pool
- 9 Pool Cabanas
- 10 Lap Pool
- 11 Kids' Pool
- 12 The Gym
- 13 Relaxation Corner
- 14 Changing Room
- 15 Pebble Walk
- 16 Kids' Playground

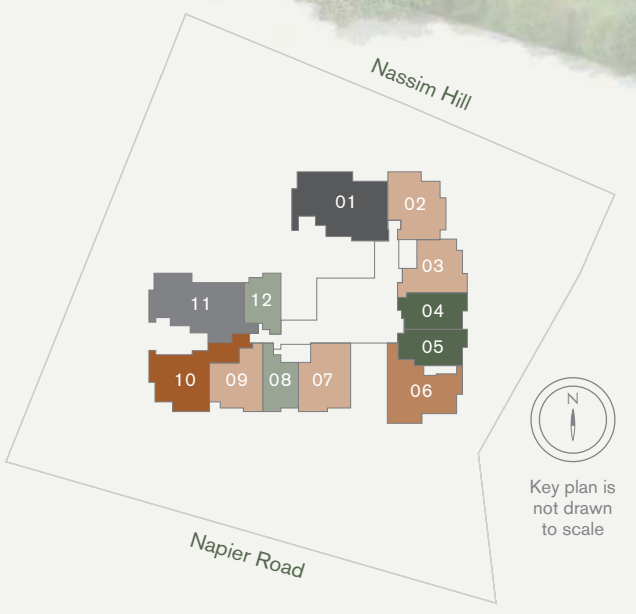
### Club Level

- 17 Relaxation Pool
- 18 Heated Jet Pool
- 19 Sun Deck
- 20 The Grill
- 21 The Terrace
- 22 The Lounge
- 23 The Club
- 24 Changing Room

### Ancillary

- A Guardhouse
- B Bin Centre
- C Substation
- D Pedestrian Gate at Nassim Hill
- E Pedestrian Gate at Napier Road
- F Service Gate
- G M&E Room
- H Green Roof (not accessible)

0 5 10 20 30M



# Unit Distribution Diagram

Unit No.	01	02	03	04	05	06	07	08	09	10	11	12	
Level													
10	CLUB LEVEL						M&E	GREEN ROOF	C3	C2	A1		
9	C1	B1	B2	AS1	AS2	BS1	B3	A2	B2A	B4	C2	A1	
8	D1	B1	B2	AS1	AS2	BS1	B3	A2	B2A	B4	C2	A1	
7	C1	B1	B2	AS1	AS2	BS1	B3	A2	B2A	B4	C2	A1	
6	D1	B1	B2	AS1	AS2	BS1	B3	A2	B2A	B4	C2	A1	
5	C1	B1	B2	AS1	AS2	BS1	B3	A2	B2A	B4	C2	A1	
4	D1	B1	B2	AS1	AS2	BS1	B3	A2	B2A	B4	C2	A1	
3	C1	B1	B2	AS1	AS2	BS1	B3	A2	B2A	B4	C2	A1	
2	D1	B1	B2	AS1	AS2	BS1	B3	A2	B2A	B4	C2	A1	
1	D1(P)	B1(P)	LOBBY LEVEL										
	POOL LEVEL												

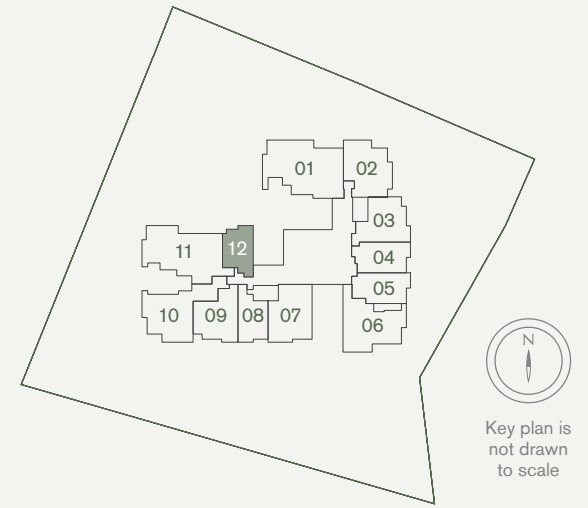
1-Bedroom
  1-Bedroom + Study
  2-Bedroom
  2-Bedroom + Study
  2-Bedroom Deluxe
  3-Bedroom Deluxe



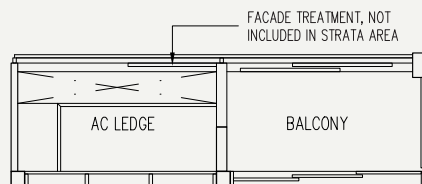
# 1-Bedroom

## Type A1

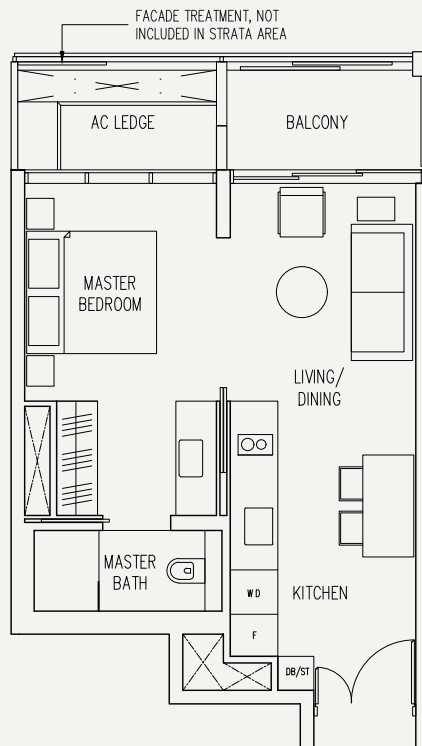
50 sqm / 538 sq ft  
#02-12 to #08-12, #09-12\*, #10-12\*



ODD FLOOR



EVEN FLOOR

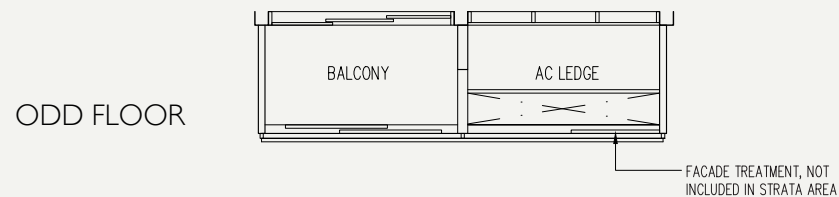
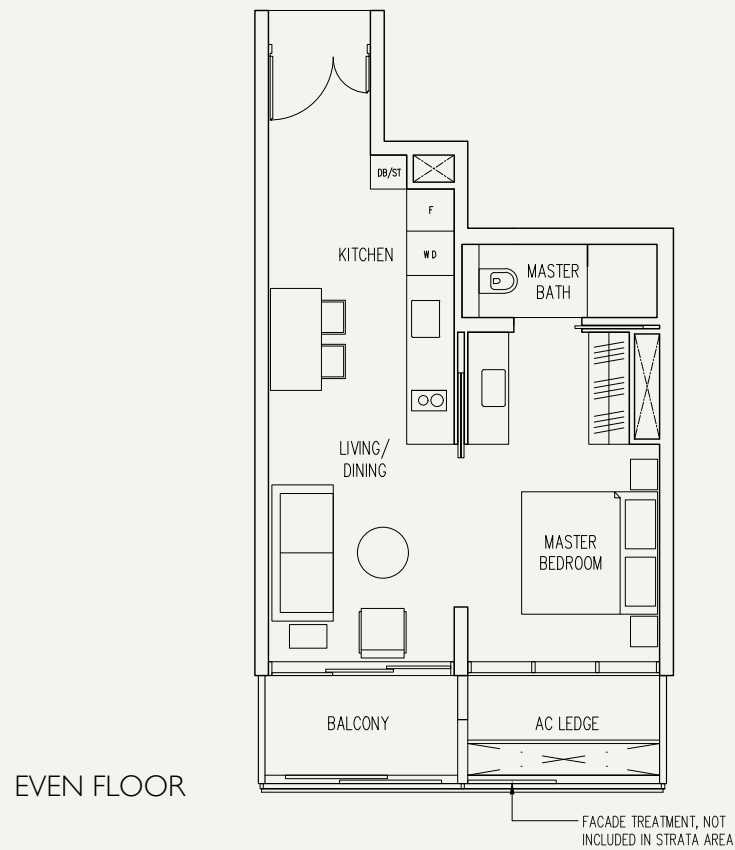
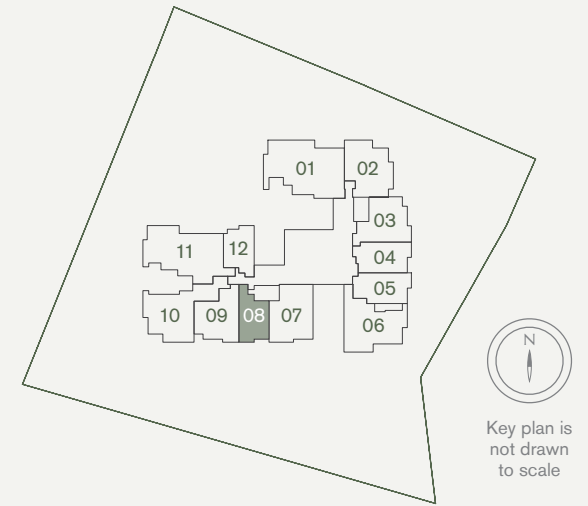


Area includes air-con (A/C) ledge, balcony and strata void area where applicable. Please refer to the key plan for orientation. The plans are subject to change as may be approved by relevant authorities. All floor plans are approximate measurements only and are subject to government re-survey. The balcony shall not be enclosed unless with the approved balcony screen. \*Denotes different ceiling height.

# 1-Bedroom

## Type A2

53 sqm / 570 sq ft  
#02-08 to #08-08, #09-08\*

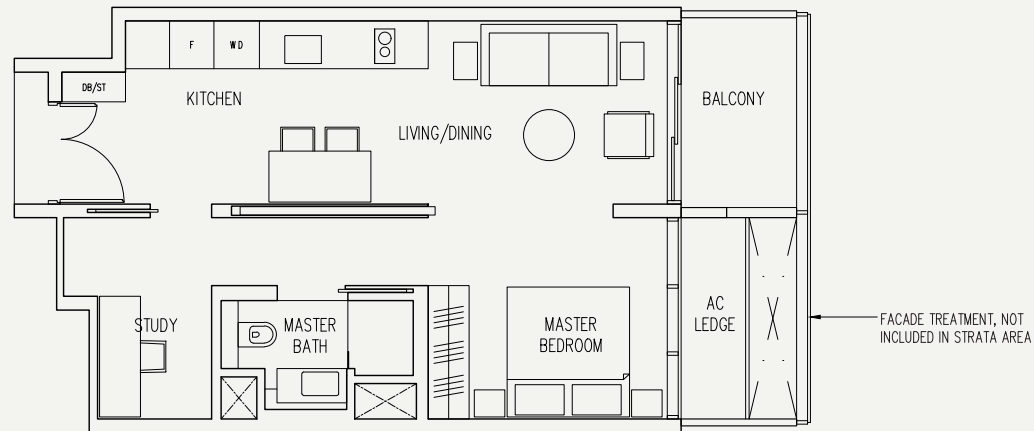
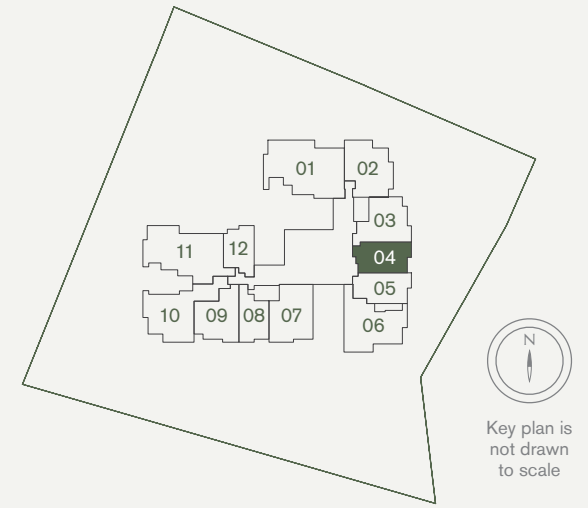


Area includes air-con (A/C) ledge, balcony and strata void area where applicable. Please refer to the key plan for orientation. The plans are subject to change as may be approved by relevant authorities. All floor plans are approximate measurements only and are subject to government re-survey. The balcony shall not be enclosed unless with the approved balcony screen. \*Denotes different ceiling height.

# 1-Bedroom + Study

Type AS1

63 sqm / 678 sq ft  
#02-04 to #09-04



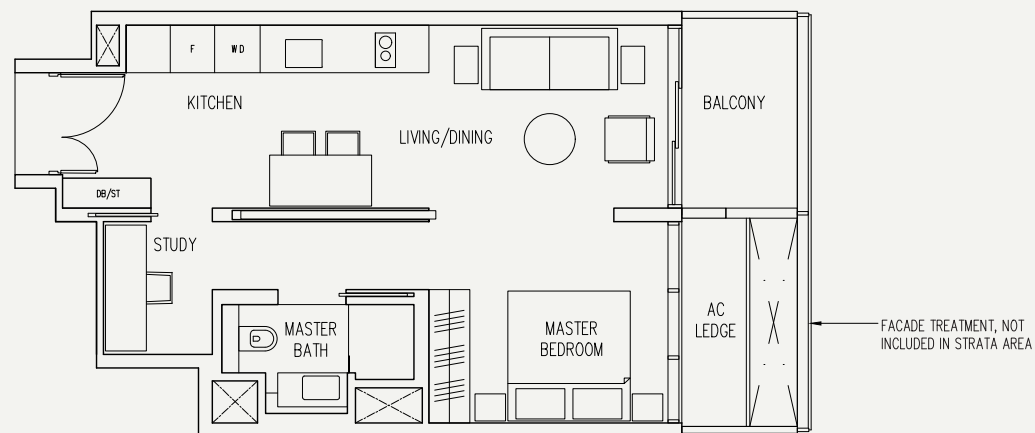
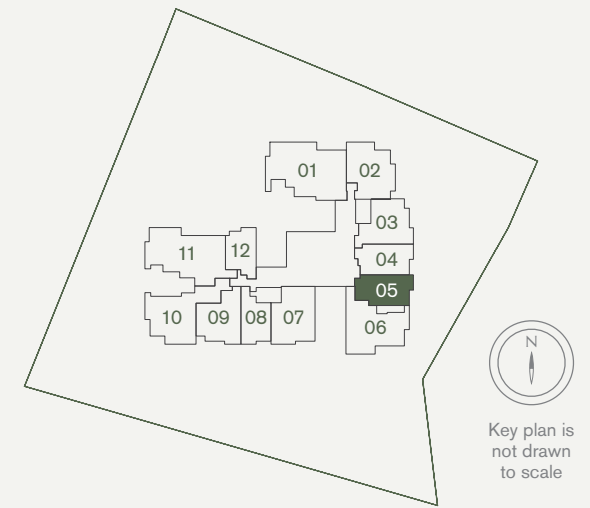
Area includes air-con (A/C) ledge, balcony and strata void area where applicable. Please refer to the key plan for orientation. The plans are subject to change as may be approved by relevant authorities. All floor plans are approximate measurements only and are subject to government re-survey. The balcony shall not be enclosed unless with the approved balcony screen. \*Denotes different ceiling height.



# 1-Bedroom + Study

Type AS2

60 sqm / 646 sq ft  
#02-05 to #09-05

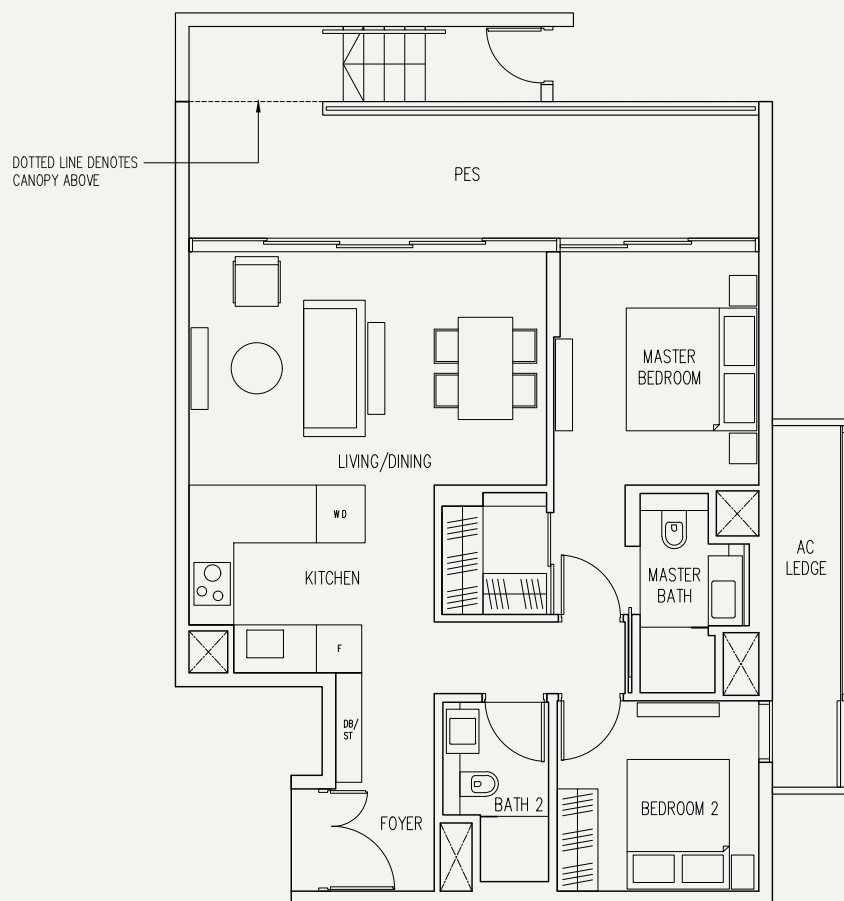
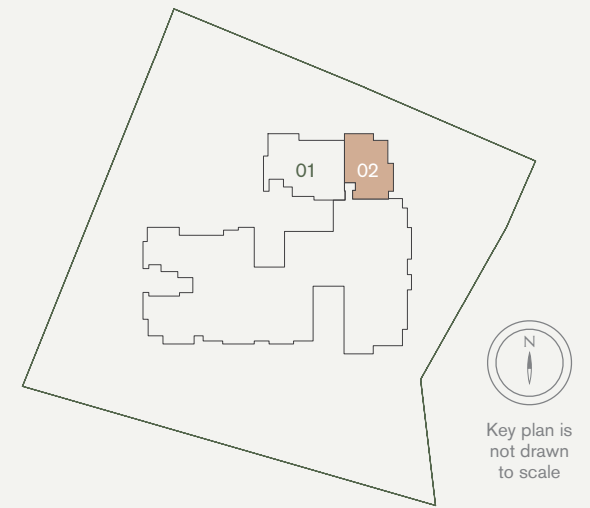


Area includes air-con (A/C) ledge, balcony and strata void area where applicable. Please refer to the key plan for orientation. The plans are subject to change as may be approved by relevant authorities. All floor plans are approximate measurements only and are subject to government re-survey. The balcony shall not be enclosed unless with the approved balcony screen. \*Denotes different ceiling height.

# 2-Bedroom

Type B1(P)

104 sqm / 1,119 sq ft  
#01-02

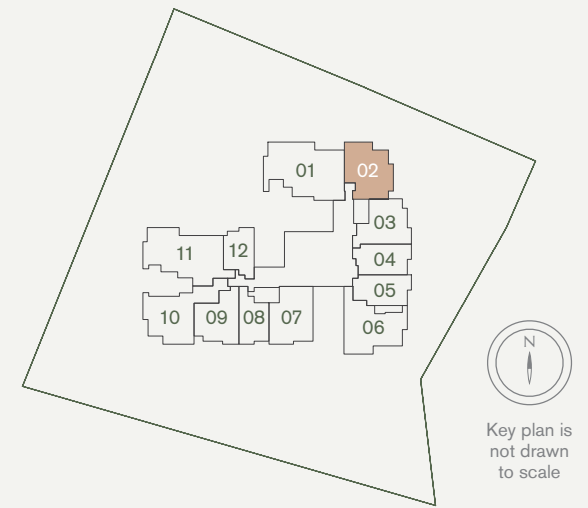


Area includes air-con (A/C) ledge, balcony and strata void area where applicable. Please refer to the key plan for orientation. The plans are subject to change as may be approved by relevant authorities. All floor plans are approximate measurements only and are subject to government re-survey. \*Denotes different ceiling height.

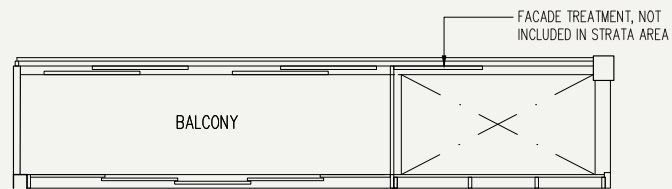
# 2-Bedroom

## Type B1

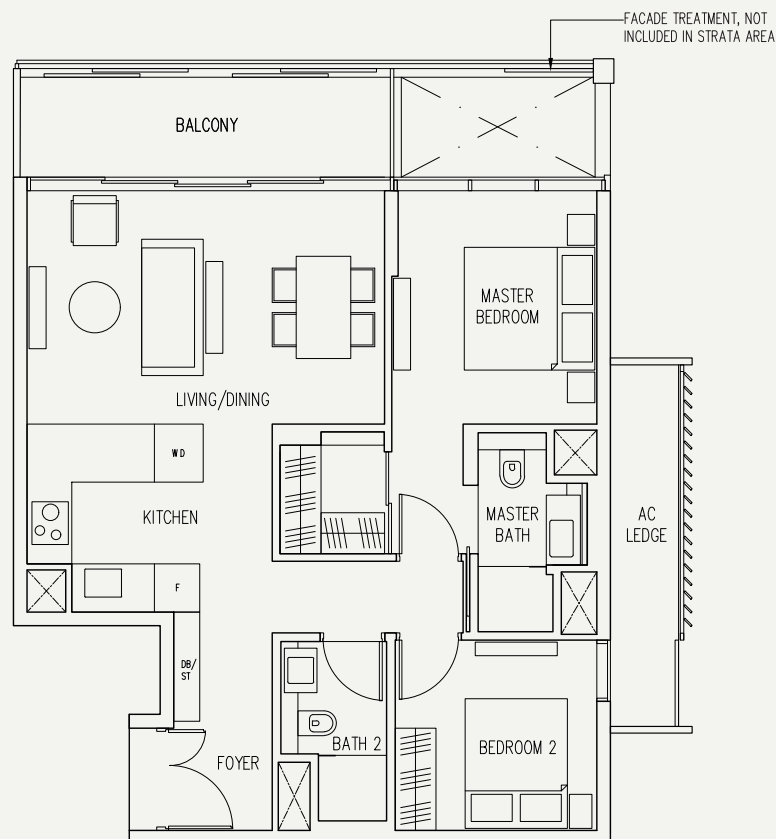
90 sqm / 969 sq ft  
#02-02 to #08-02, #09-02\*



ODD FLOOR



EVEN FLOOR



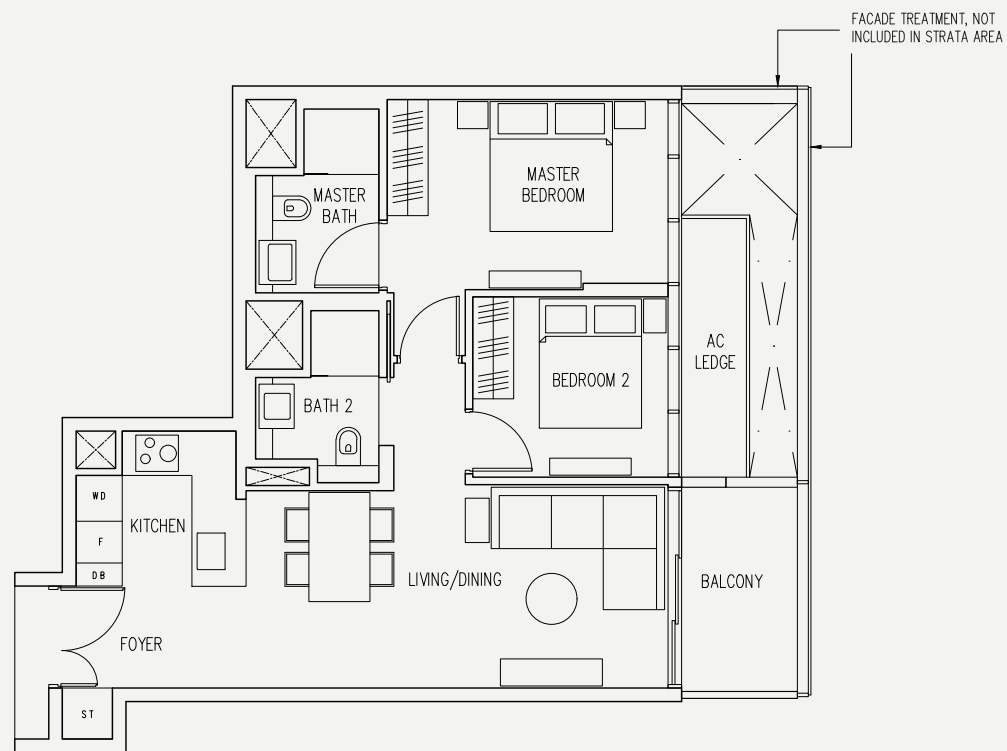
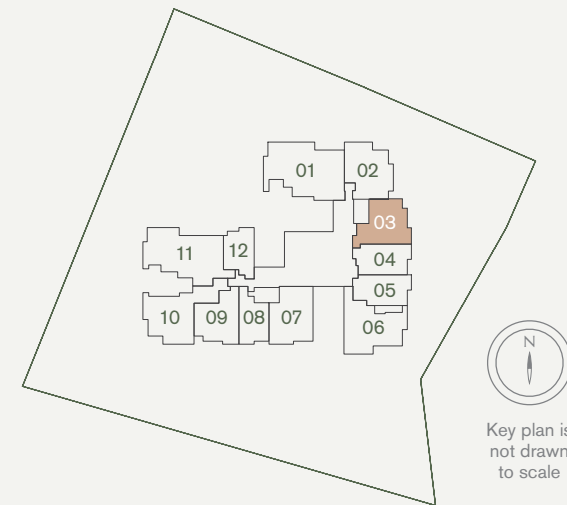
Area includes air-con (A/C) ledge, balcony and strata void area where applicable. Please refer to the key plan for orientation. The plans are subject to change as may be approved by relevant authorities. All floor plans are approximate measurements only and are subject to government re-survey. The balcony shall not be enclosed unless with the approved balcony screen. \*Denotes different ceiling height.



# 2-Bedroom

## Type B2

77 sqm / 829 sq ft  
#02-03 to #09-03

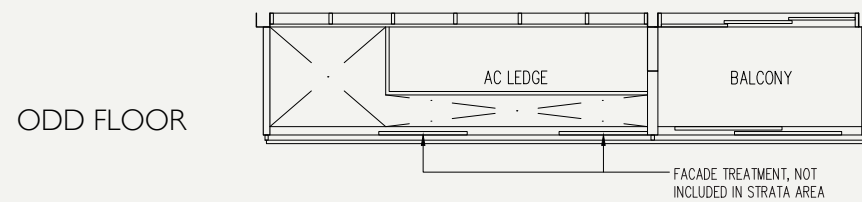
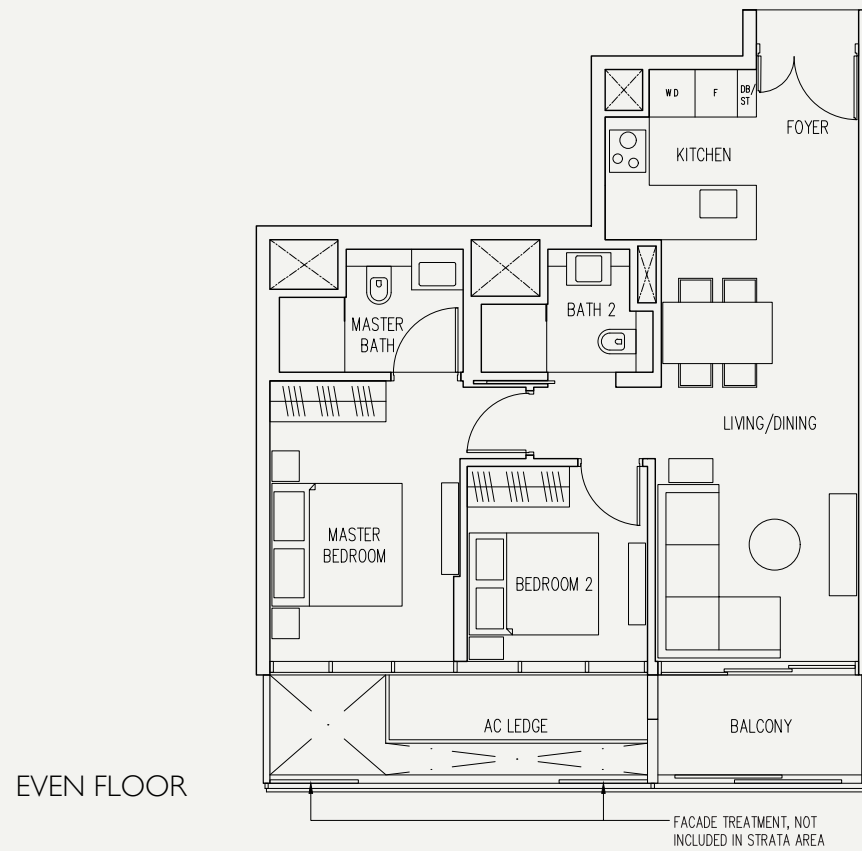
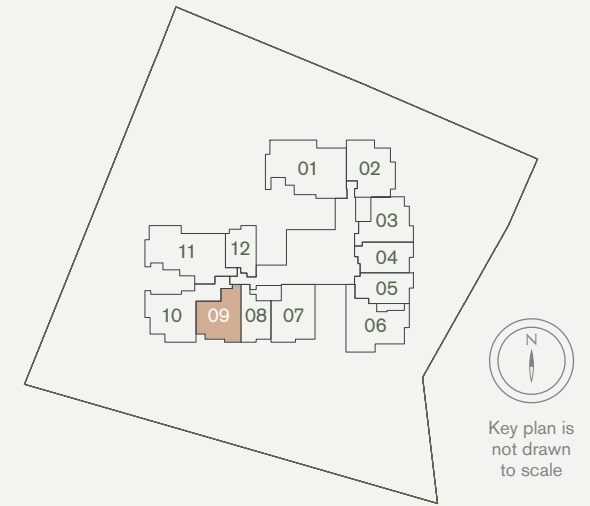


Area includes air-con (A/C) ledge, balcony and strata void area where applicable. Please refer to the key plan for orientation. The plans are subject to change as may be approved by relevant authorities. All floor plans are approximate measurements only and are subject to government re-survey. The balcony shall not be enclosed unless with the approved balcony screen. \*Denotes different ceiling height.

# 2-Bedroom

## Type B2A

75 sqm / 807 sq ft  
#02-09 to #08-09, #09-09\*

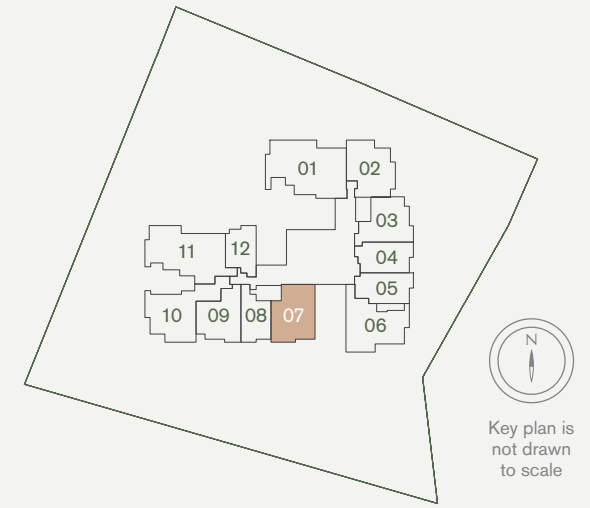


Area includes air-con (A/C) ledge, balcony and strata void area where applicable. Please refer to the key plan for orientation. The plans are subject to change as may be approved by relevant authorities. All floor plans are approximate measurements only and are subject to government re-survey. The balcony shall not be enclosed unless with the approved balcony screen. \*Denotes different ceiling height.

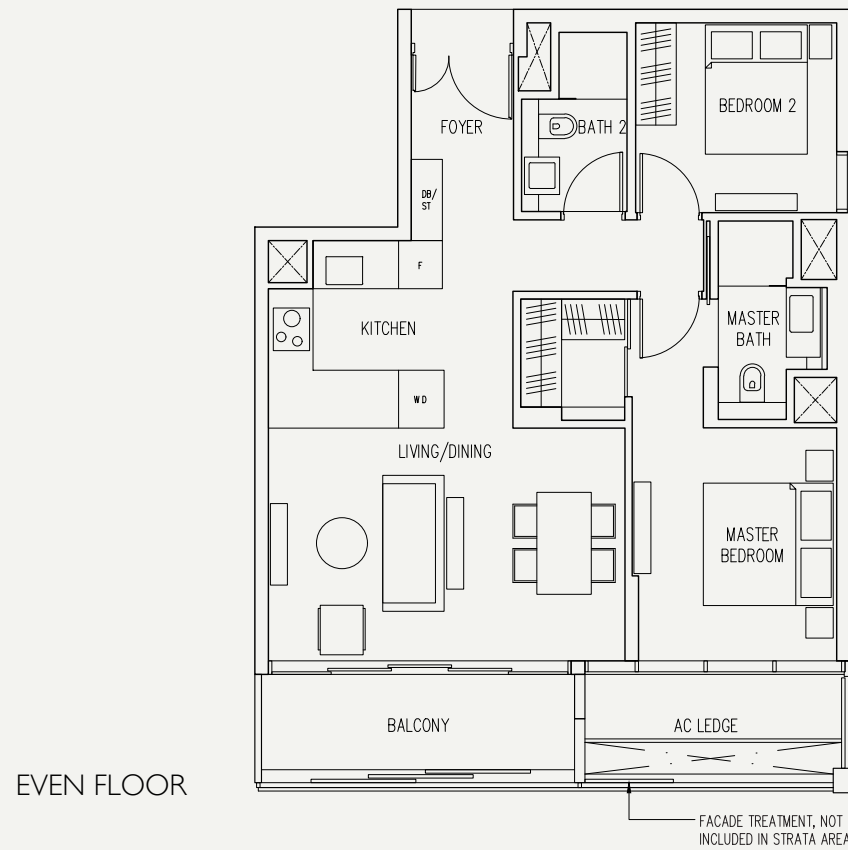
# 2-Bedroom

## Type B3

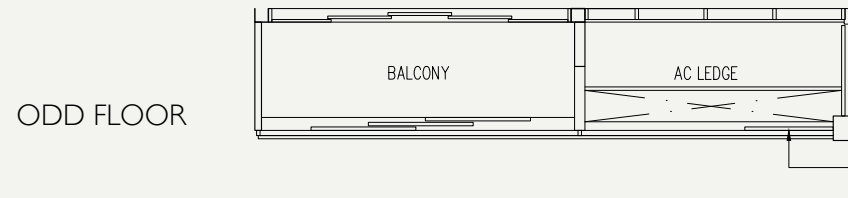
86 sqm / 926 sq ft  
#02-07 to #08-07, #09-07\*



Key plan is not drawn to scale



EVEN FLOOR



ODD FLOOR

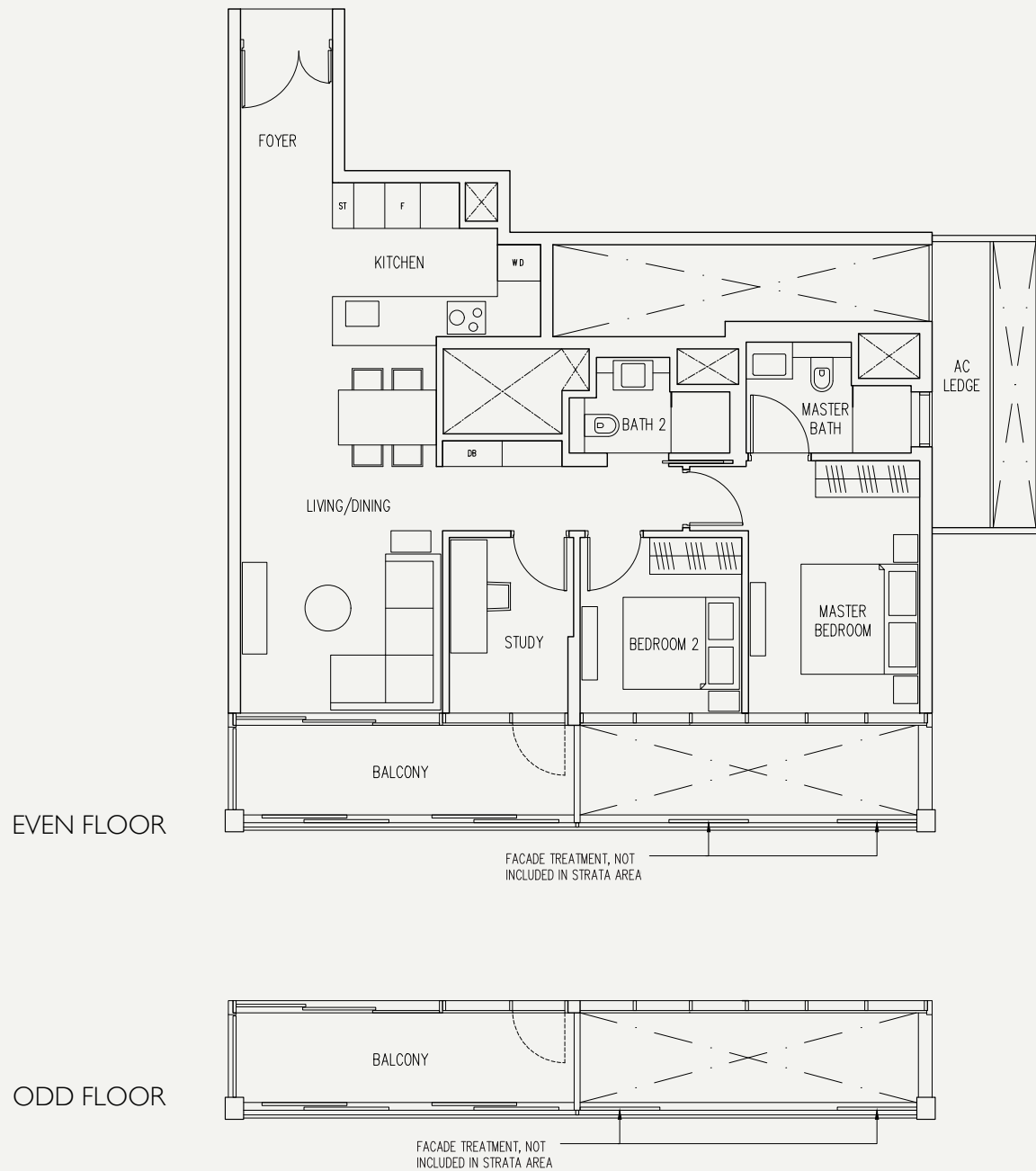
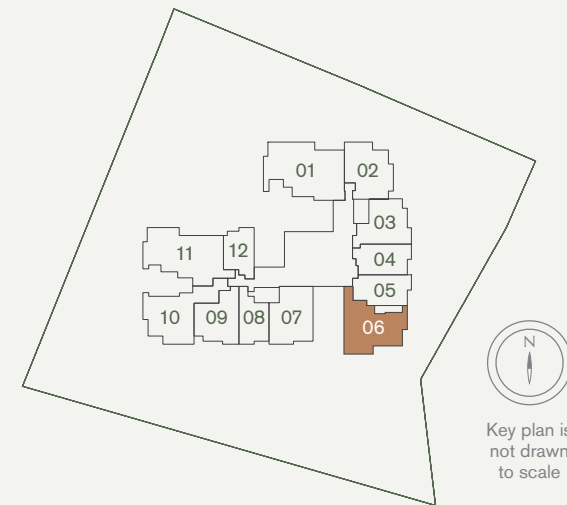


Area includes air-con (A/C) ledge, balcony and strata void area where applicable. Please refer to the key plan for orientation. The plans are subject to change as may be approved by relevant authorities. All floor plans are approximate measurements only and are subject to government re-survey. The balcony shall not be enclosed unless with the approved balcony screen. \*Denotes different ceiling height.

# 2-Bedroom + Study

Type BS1

98 sqm / 1,055 sq ft  
#02-06 to #09-06

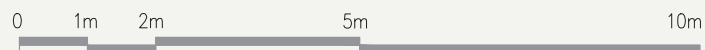
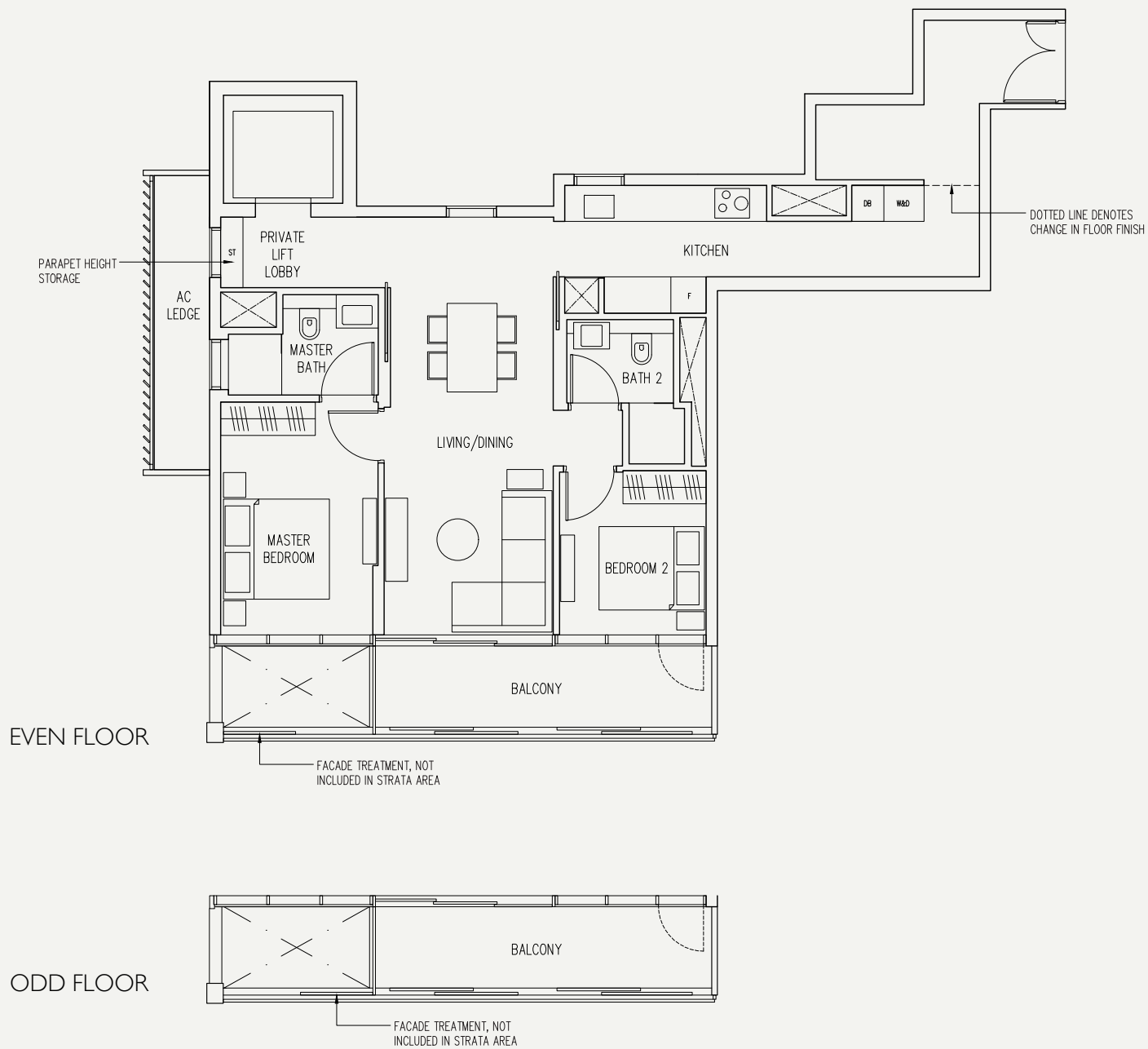
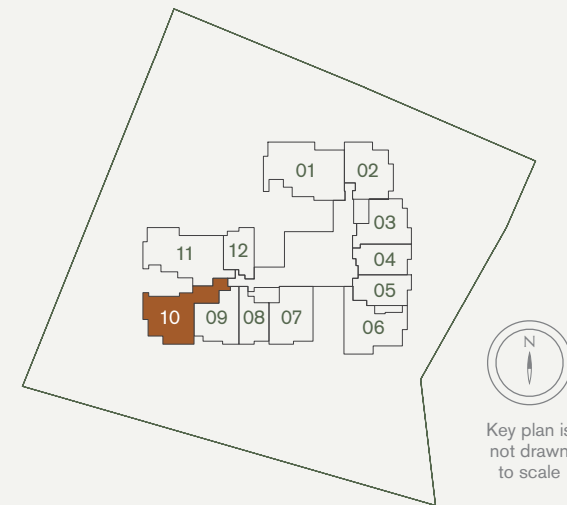


Area includes air-con (A/C) ledge, balcony and strata void area where applicable. Please refer to the key plan for orientation. The plans are subject to change as may be approved by relevant authorities. All floor plans are approximate measurements only and are subject to government re-survey. The balcony shall not be enclosed unless with the approved balcony screen. \*Denotes different ceiling height.

# 2-Bedroom Deluxe

Type B4

103 sqm / 1,109 sq ft  
#02-10 to #08-10, #09-10\*

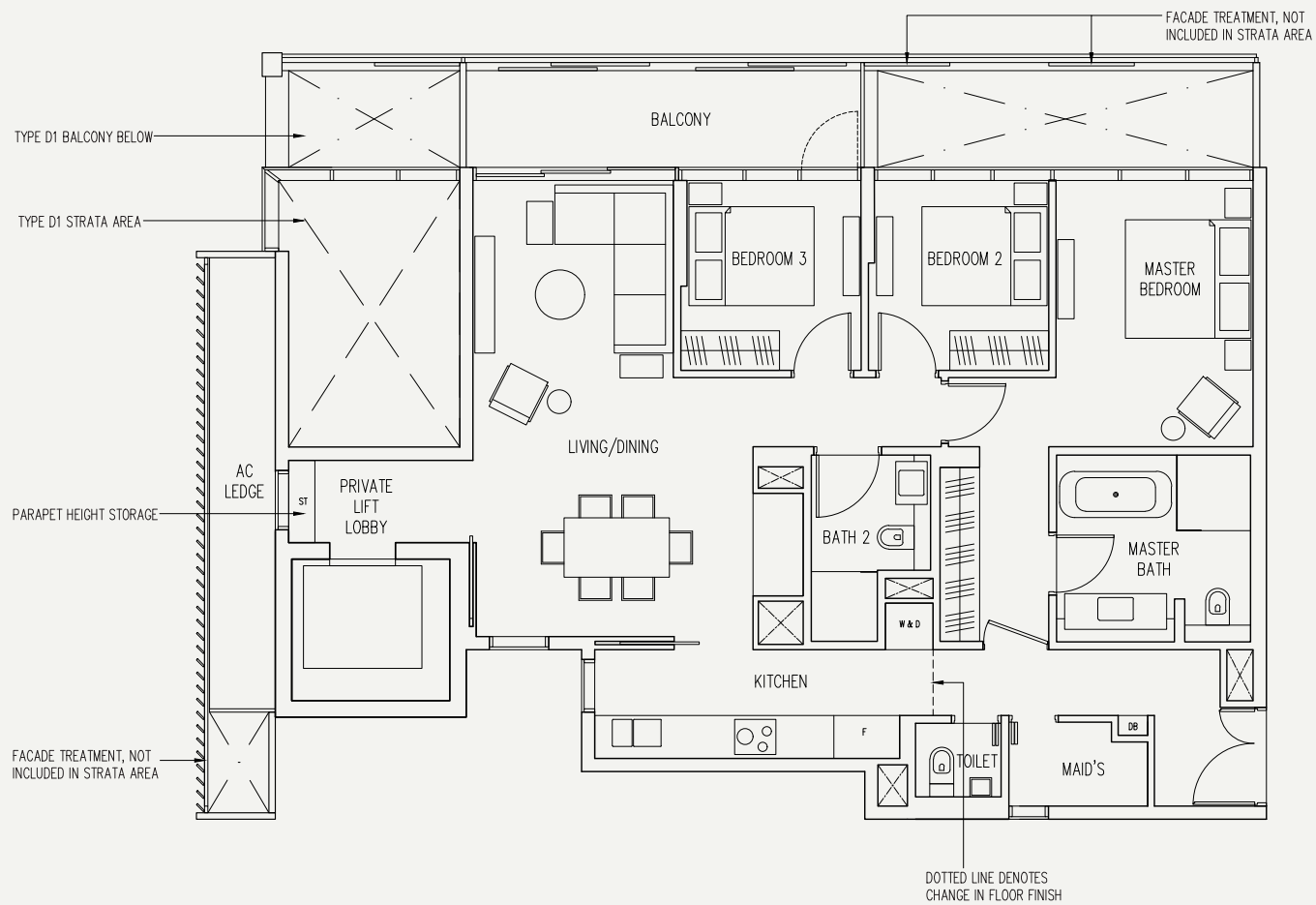
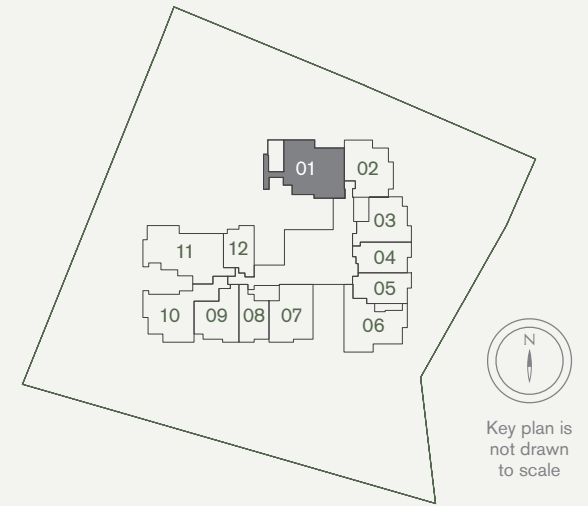


Area includes air-con (A/C) ledge, balcony and strata void area where applicable. Please refer to the key plan for orientation. The plans are subject to change as may be approved by relevant authorities. All floor plans are approximate measurements only and are subject to government re-survey. The balcony shall not be enclosed unless with the approved balcony screen. \*Denotes different ceiling height.

# 3-Bedroom Deluxe

Type C1

131 sqm / 1,410 sq ft  
#03-01, #05-01, #07-01, #09-01\*

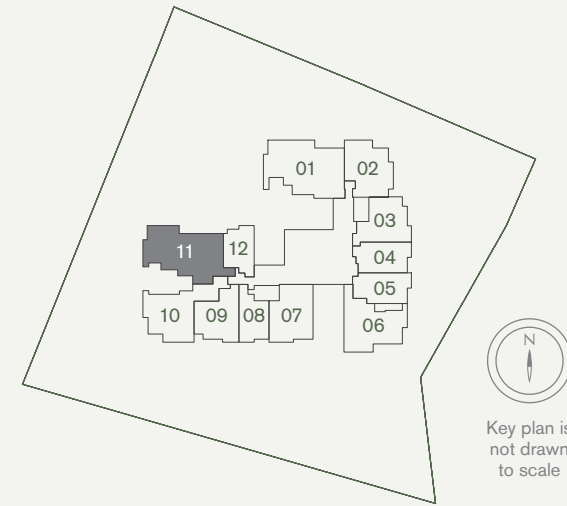


Area includes air-con (A/C) ledge, balcony and strata void area where applicable. Please refer to the key plan for orientation. The plans are subject to change as may be approved by relevant authorities. All floor plans are approximate measurements only and are subject to government re-survey. The balcony shall not be enclosed unless with the approved balcony screen. \*Denotes different ceiling height.

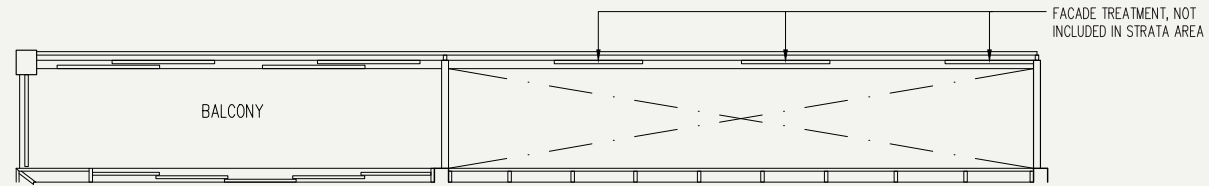
# 3-Bedroom Deluxe

Type C2

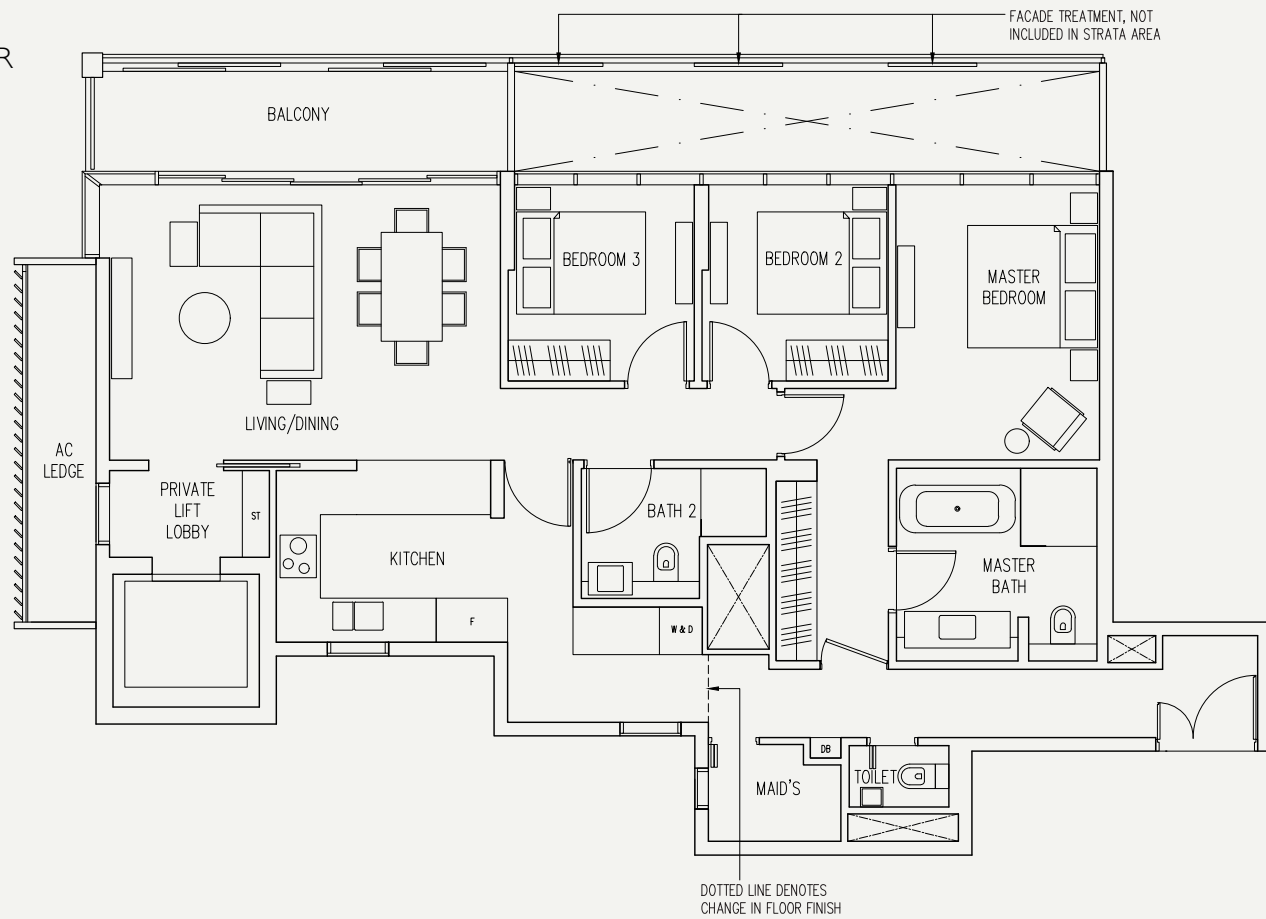
137 sqm / 1,475 sq ft  
#02-11 to #08-11, #09-11\*, #10-11\*



ODD FLOOR



EVEN FLOOR



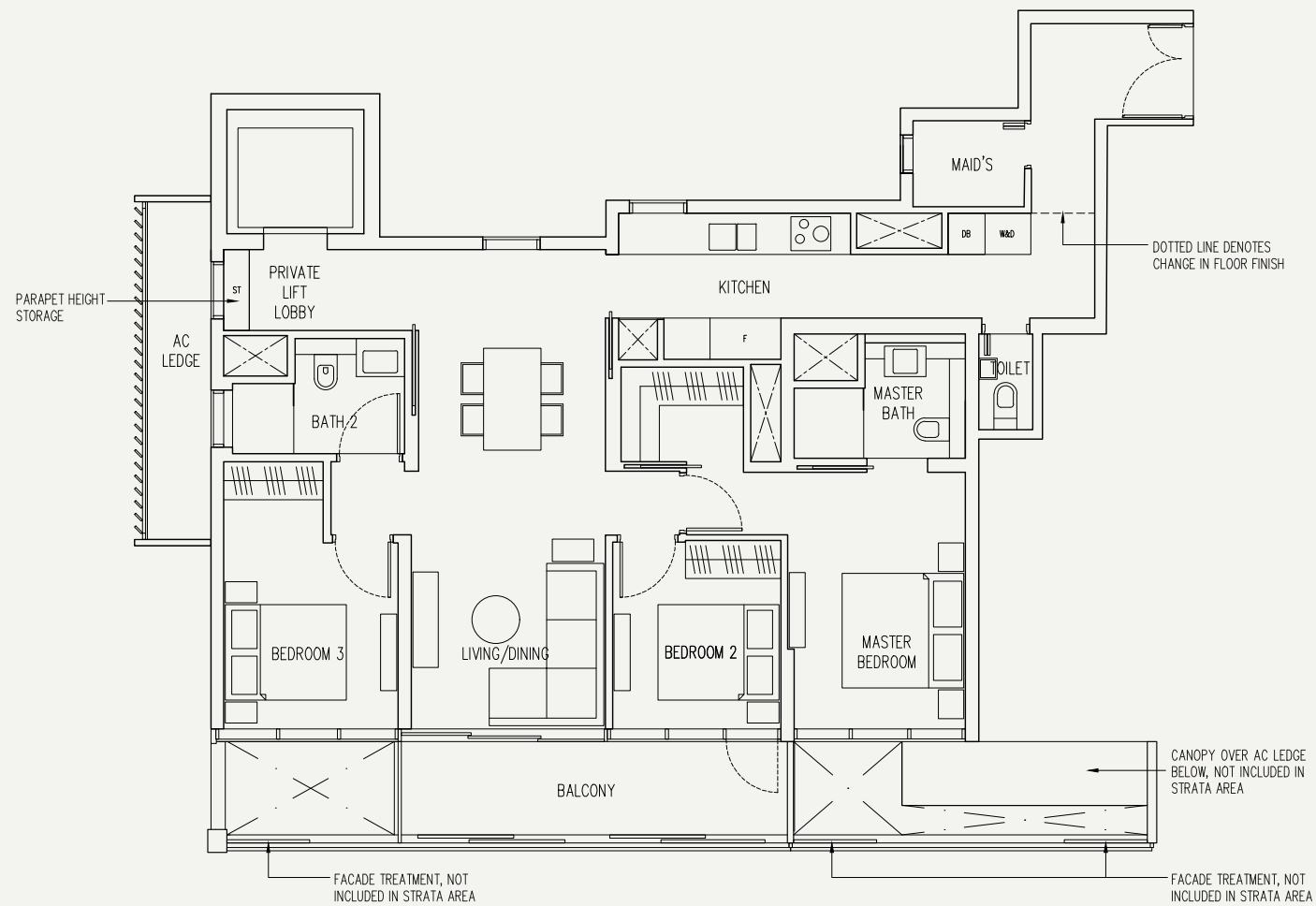
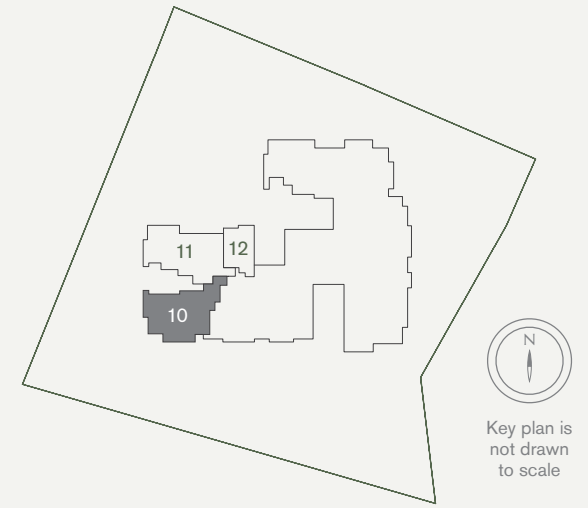
Area includes air-con (A/C) ledge, balcony and strata void area where applicable. Please refer to the key plan for orientation. The plans are subject to change as may be approved by relevant authorities. All floor plans are approximate measurements only and are subject to government re-survey. The balcony shall not be enclosed unless with the approved balcony screen. \*Denotes different ceiling height.



# 3-Bedroom Deluxe

Type C3

123 sqm / 1,324 sq ft  
#10-10

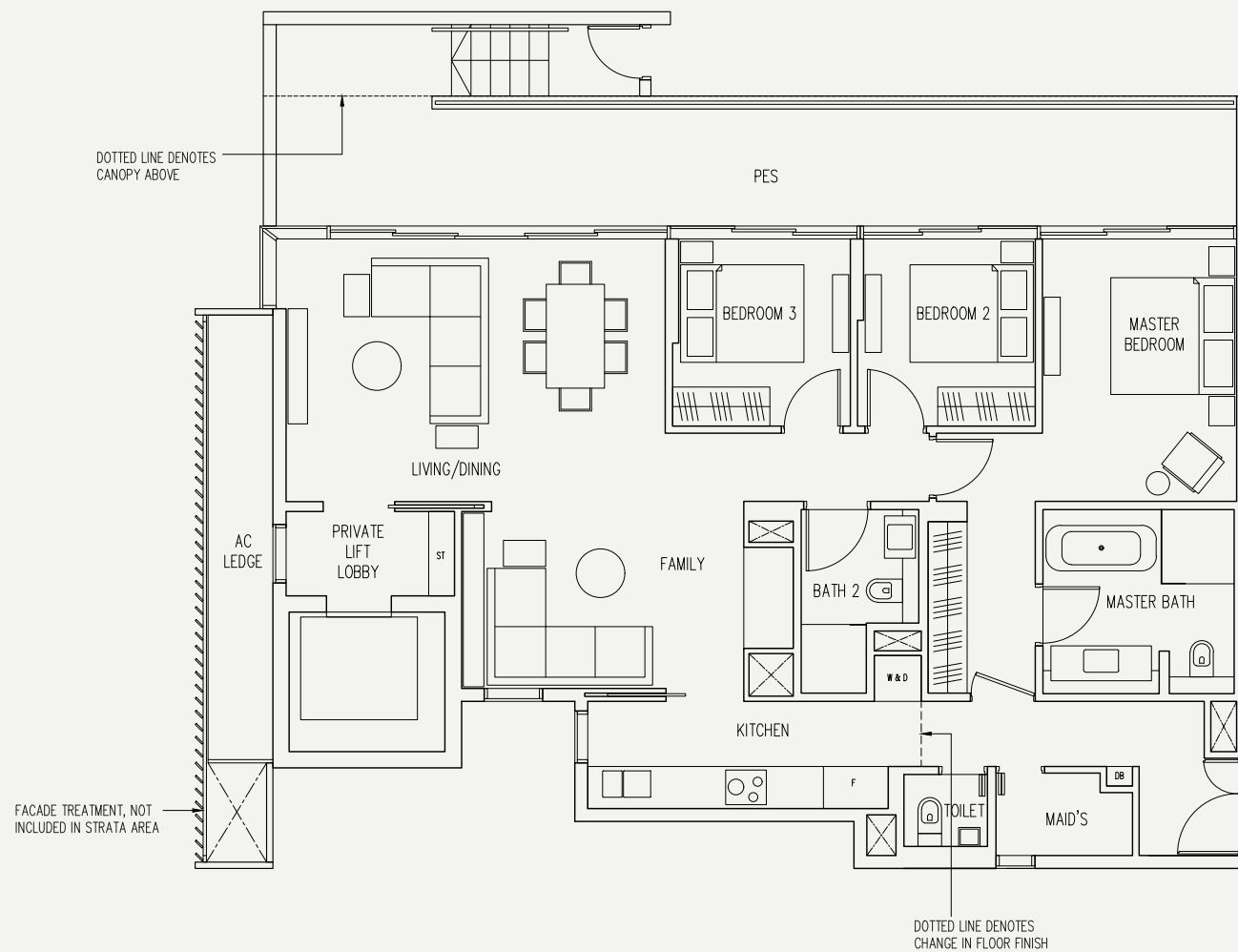
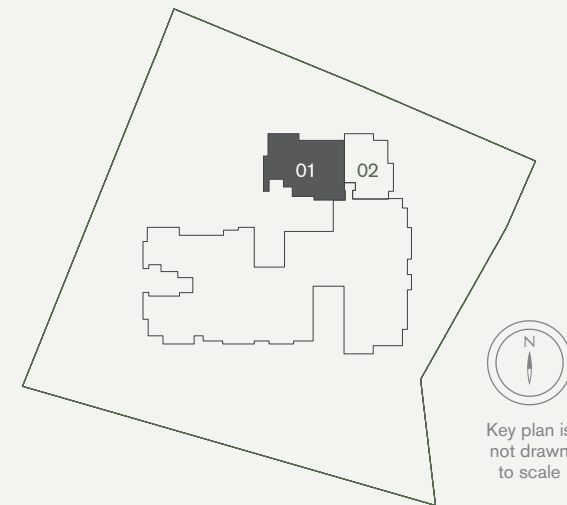


Area includes air-con (A/C) ledge, balcony and strata void area where applicable. Please refer to the key plan for orientation. The plans are subject to change as may be approved by relevant authorities. All floor plans are approximate measurements only and are subject to government re-survey. The balcony shall not be enclosed unless with the approved balcony screen. \*Denotes different ceiling height.

# 3-Bedroom Deluxe

Type D1(P)

170 sqm / 1,830 sq ft  
#01-01

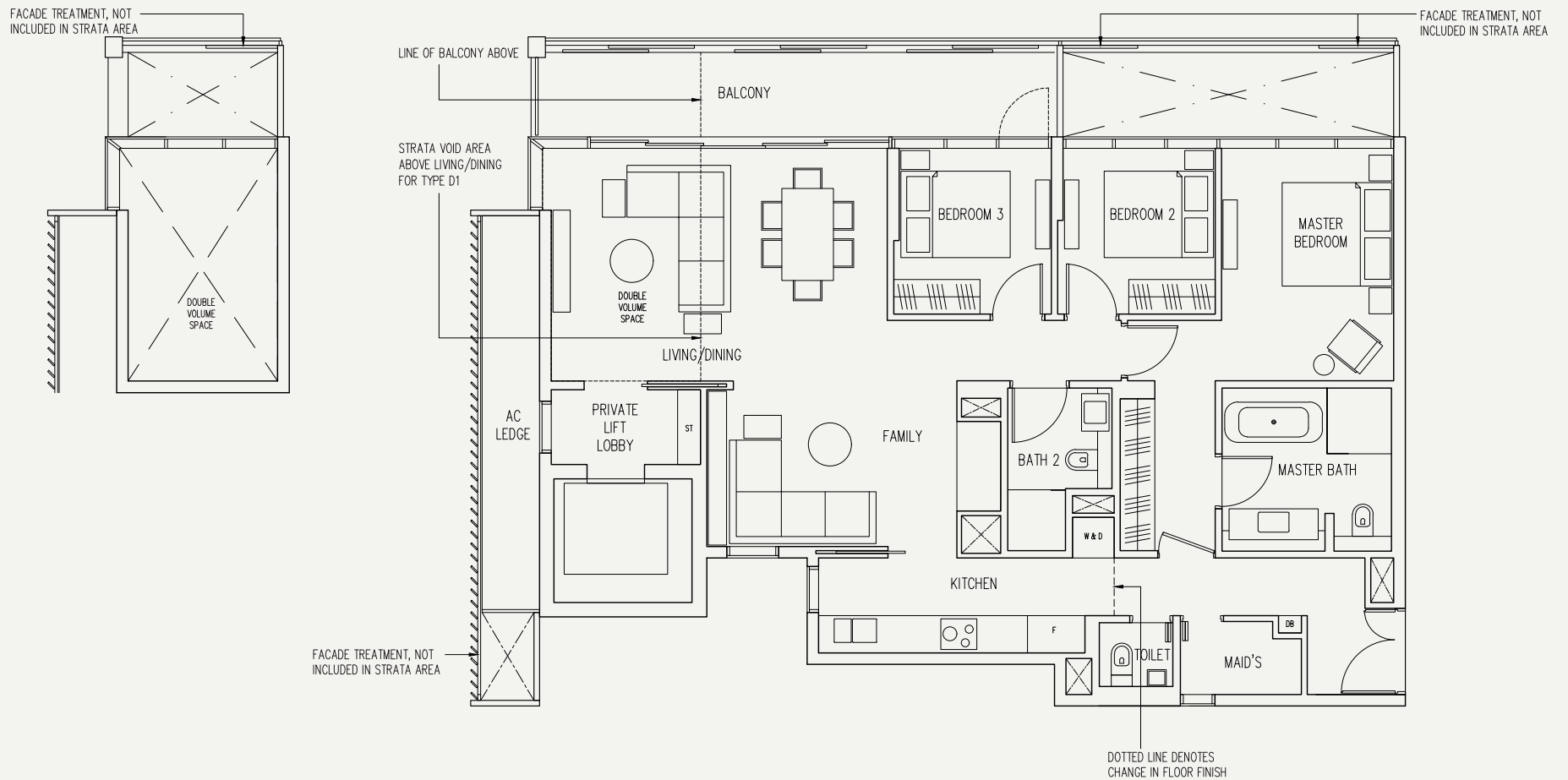
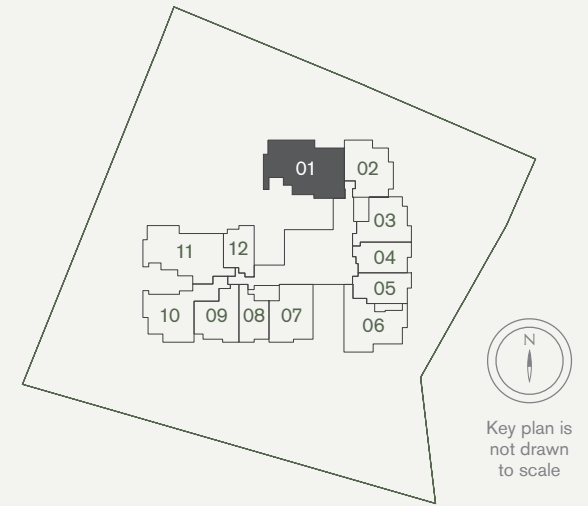


Area includes air-con (A/C) ledge, balcony and strata void area where applicable. Please refer to the key plan for orientation. The plans are subject to change as may be approved by relevant authorities. All floor plans are approximate measurements only and are subject to government re-survey. The balcony shall not be enclosed unless with the approved balcony screen. \*Denotes different ceiling height.

# 3-Bedroom Deluxe

**Type D1**

161 sqm / 1,733 sq ft  
 #02-01, #04-01, #06-01, #08-01\*



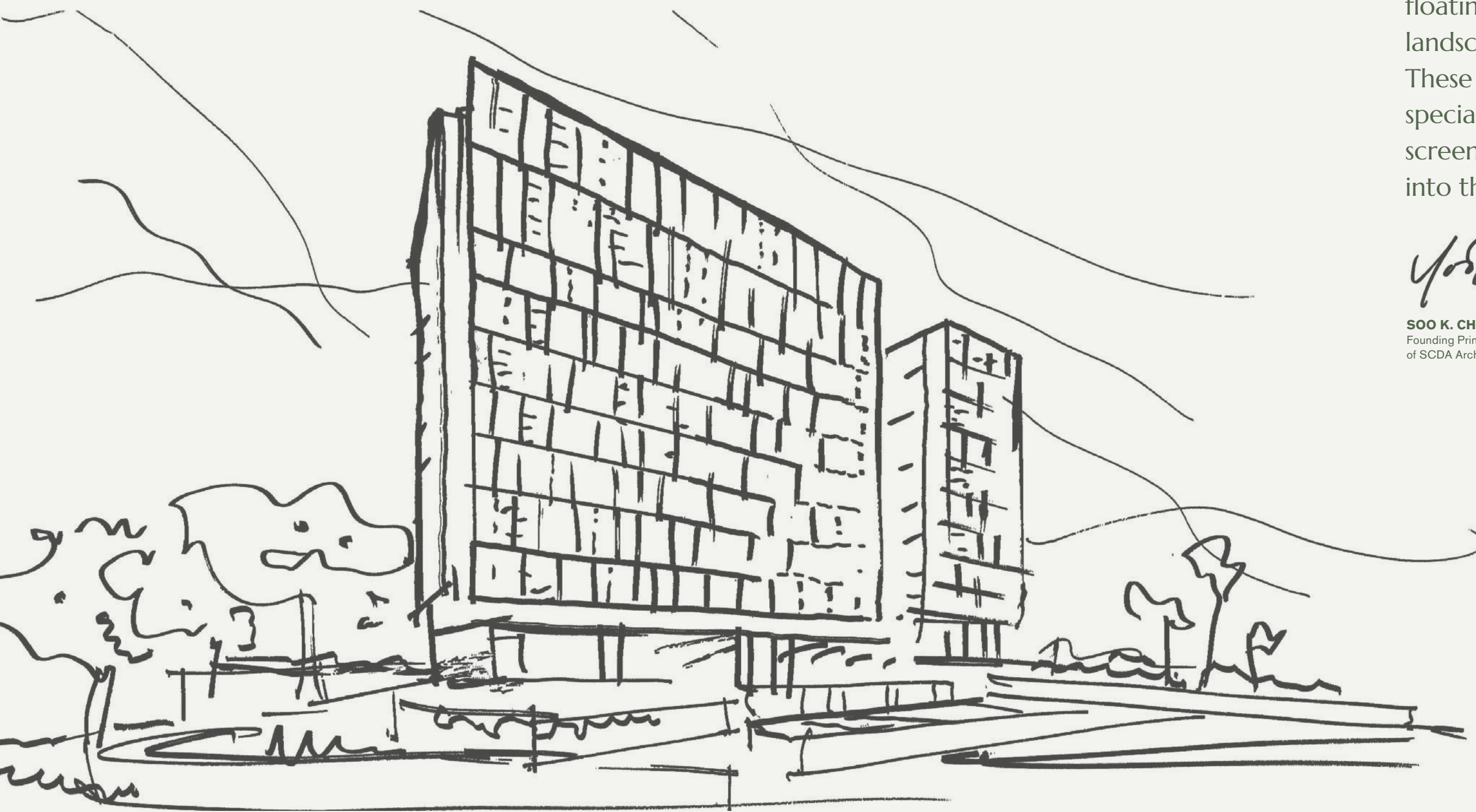
Area includes air-con (A/C) ledge, balcony and strata void area where applicable. Please refer to the key plan for orientation. The plans are subject to change as may be approved by relevant authorities. All floor plans are approximate measurements only and are subject to government re-survey. The balcony shall not be enclosed unless with the approved balcony screen. \*Denotes different ceiling height.

# An Architectural Gem by Keppel Land & SCDA



“The building is conceived as a floating volume with a continuous landscape plane that runs through. These volumes are articulated with specially profiled architectural screens that allow filtered sunlight into the interiors.”

**SOO K. CHAN**  
Founding Principal and Design Director  
of SCDA Architects Pte Ltd.



## An Acclaimed Celebrity Architect

Soo K. Chan is the Principal of SCDA Architects and an award-winning architect based in Singapore. He obtained his Master of Architecture degree from Yale University in 1987. Under his leadership, SCDA has grown to over 120 employees with offices in Singapore, Shanghai and New York.

Soo K. Chan's signature minimalist approach and transitional design blends the boundaries between indoors and outdoors making architecture at one with its natural surroundings.

His impeccable body of architectural work includes the Alila Villas Soori Bali, Indonesia, the Soori Niseko ski resort, Japan, the Soori Highline New York City, United States and now, 19 Nassim Hill.